

Chapter 6

COMMUNITY PROFILE

6.1 GEOGRAPHIC SETTING

The Town of Eatonville is located in southeastern Pierce County, along the shores of Mashell River and at the crossroads leading to and from Mount Rainier National Park. The Town of Eatonville is an urban community surrounded by farmlands and forests. The current population of the Town of Eatonville is in excess of 2,000 persons. The Town serves a market or service area of about 4,000 persons. State Highway 161 connects the Town of Eatonville with communities in Eastern Pierce County, such as Puyallup, Buckley, Orting and Bonney-Lake. State Highway 7, which is also called the Mountain Highway, connects Eatonville with the City of Tacoma and Port of Tacoma.

6.2 HISTORY

The Eatonville area was settled in early 1800's. The settlers were attracted to the area by rich and fertile soil found in flat river valleys. Logging soon became the focus of the Eatonville community. Roads and railroads were built to move the logs from the forest to the sawmills and docks in Tacoma. Mount Rainier National Park was established by act of Congress, which began to draw visitors passing through Eatonville. The Town of Eatonville was incorporated on October 16, 1909.

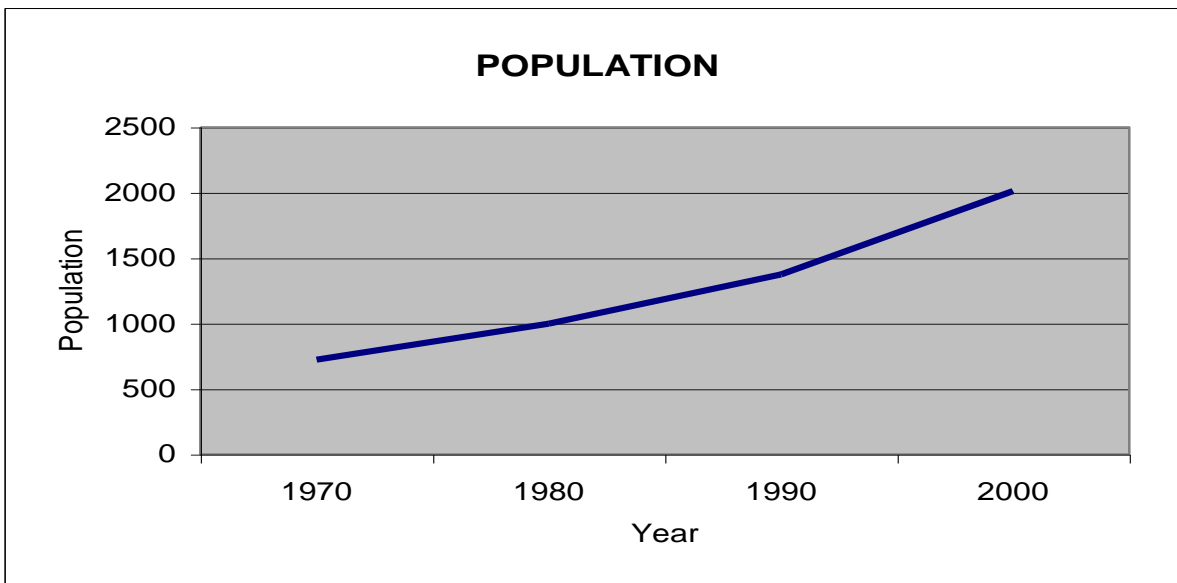
Timber harvesting resulted in the establishment of sawmills in Eatonville. The first recorded sawmill, however primitive, was established at about 1894. In 1907 the Eatoville Lumber Company was founded which operated until mid 1980s.

Today, the Town of Eatonville is made up of residents who have chosen to come to live in Eatonville, seeking idyllic rural lifestyle but still enjoying the conveniences of urban living. A small town atmosphere characterizes the ambiance of Eatonville. The residents of Eatonville, those in the workforce, are employed both in Eatonville and commute to job sites such as Tacoma, Puyallup, Kent Valley and as far as Seattle. Many US National Park Service employees have chosen to live in Eatonville. Eatonville's commercial center provides its residents with basic retail and service needs. Specialty shopping takes place in major shopping districts of Tacoma and Seattle. Eatonville School District provides K through 12 education for residents of Eatonville plus those living outside the corporate boundary.

6.3 POPULATION

The U.S. Census reports that population of Eatonville has grown from 724 persons in 1970 to 2,012 persons in the year 2000. The Washington State Office of Financial Management estimates Eatonville’s population to be 2,070 in 2002. Population growth for Eatonville is shown graphically in Figure 6-1 and in table form in Table 6-1.

**Figure 6-1
Eatonville Population**



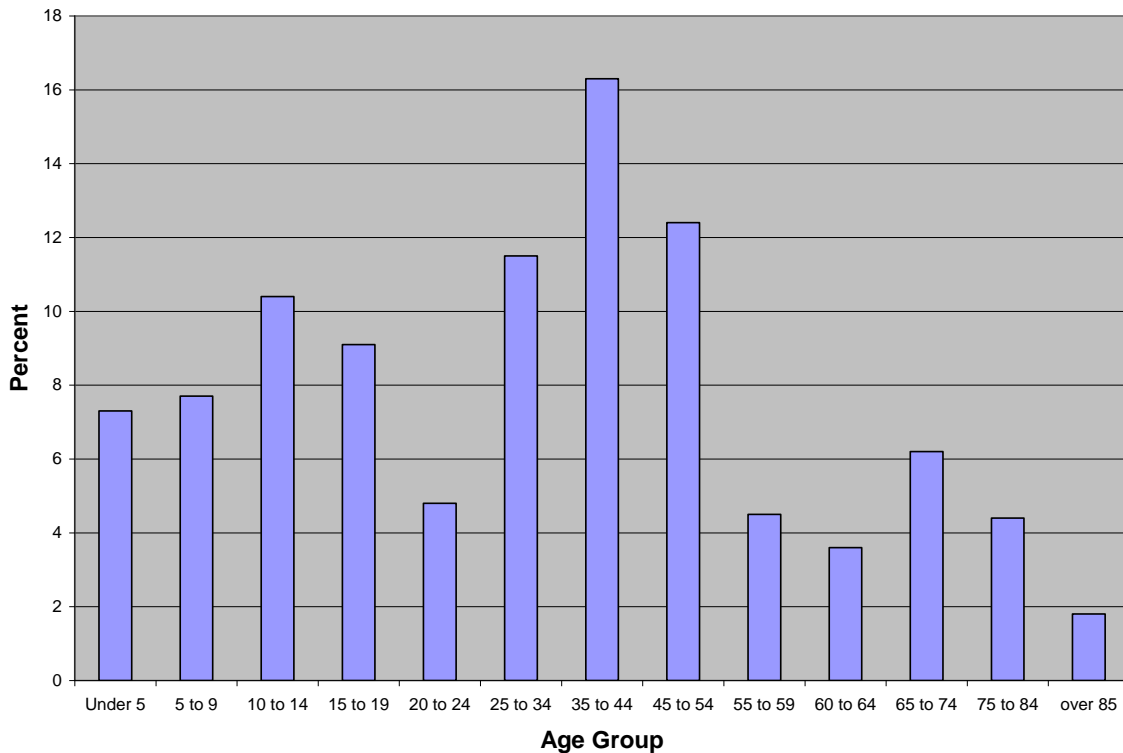
**Table 6-1
Eatonville Population**

Year	Population
1970	724
1980	918
1990	1,374
2000	2,012
2001	2,040
2002	2,070
2003	2,095
2004	2,165

COMMUNITY PROFILE

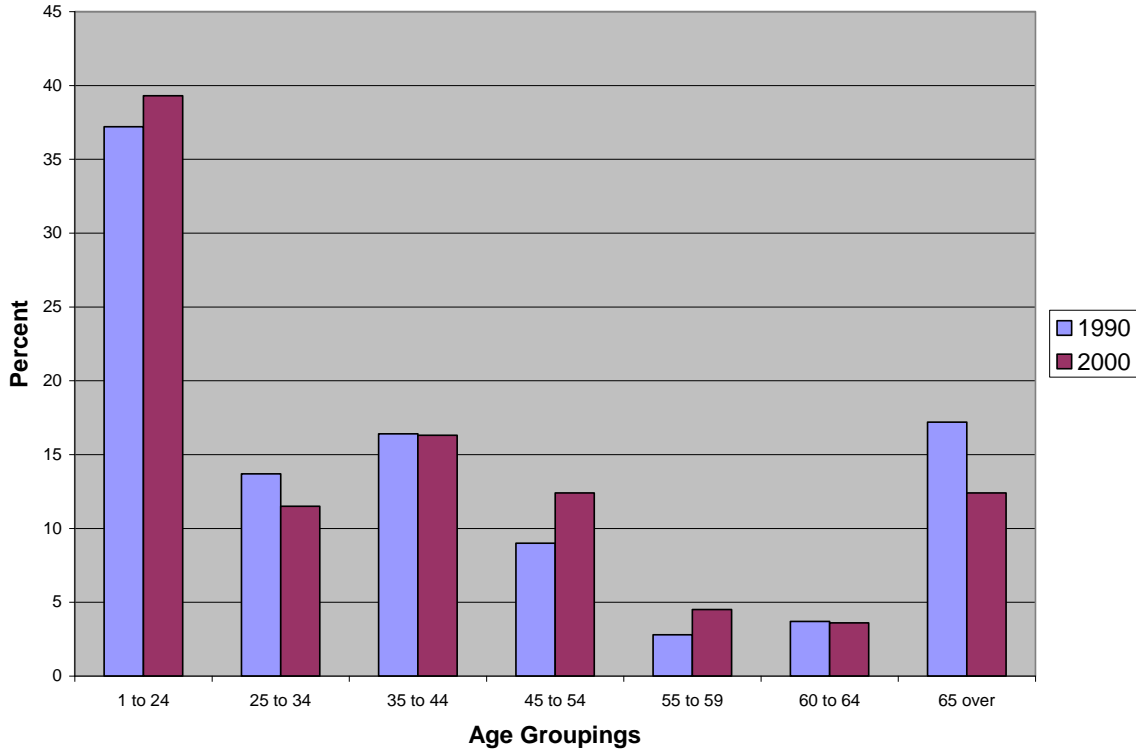
From 1970 to 1980, population in Eatonville increased 37.8 percent. The population increase from 1980 to 1990 amounted to 37.7 percent and from 1990 to 2000; the increase amounted to 46.4 percent. The 2000 U.S. Census reports that there were 748 households in Eatonville. Of the 748 households, 542 were families. The average family size in Eatonville in 2000 amounted to 3.16 persons and the average household size amounted to 2.69 persons. In 2000, there were 695 persons under the age of 20 and of those 576 were enrolled in K-12 schools and in colleges. The number of persons by age grouping is shown in Figure 6-2.

Figure 6-2
Percent of Population by Age Group
Year 2000



Demographics in Eatonville have changed from 1990 to 2000. Two notable changes have occurred. Persons in the one to twenty four year group have increased while the 65 and over group has decreased. Generally, the working age group of 25 to 64 has stayed about the same in 2000 as it was in 1990. A graph showing a comparison of age groups from 1990 to 2000 is shown in Figure 6-3.

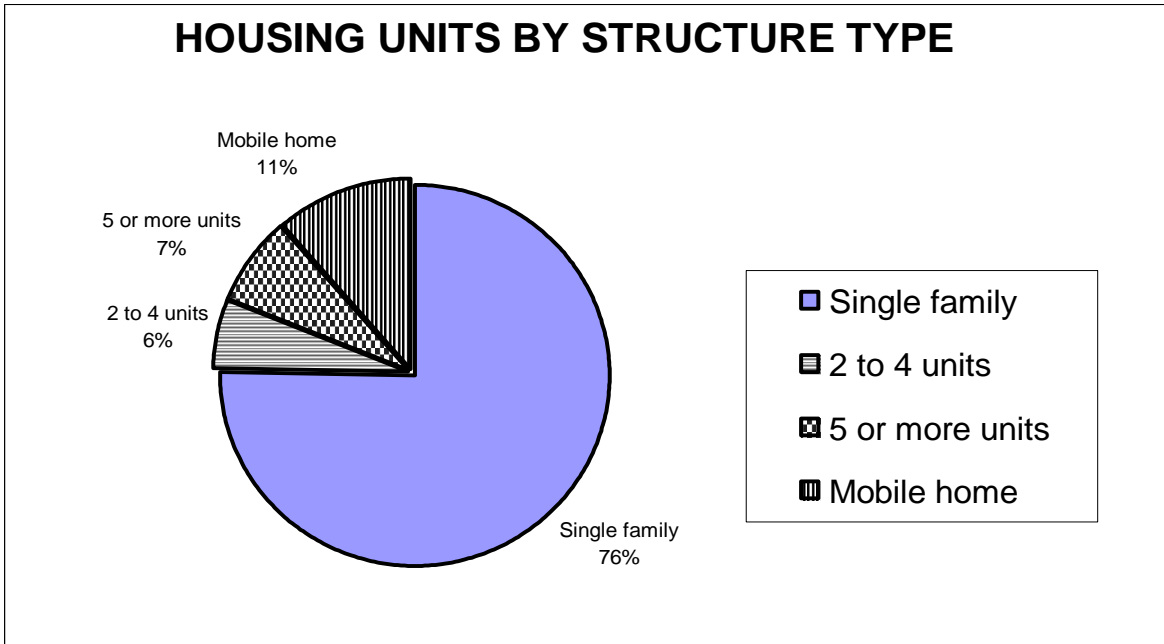
**Figure 6-3
Percent of Population by Age Group
Comparison of 1990 and 2000**



6.4 HOUSING

U.S. Census reports that there were 805 housing units in Eatonville in 2000. Of the 805 housing units, 748 units or 92.9 percent were occupied and 57 units or 7.1 percent were vacant. Of the 748 occupied housing units, 528 units or 70.6 percent were owner occupied and 220 units, or 29.4 percent were renter occupied. The number of housing units by structure type is shown in Figure 6-4. The single family detached home is the predominant residential structure type. The number of housing units by structure type is shown in Table 6-2

**Figure 6-4
Housing Units by Structure Type
Year 2000**

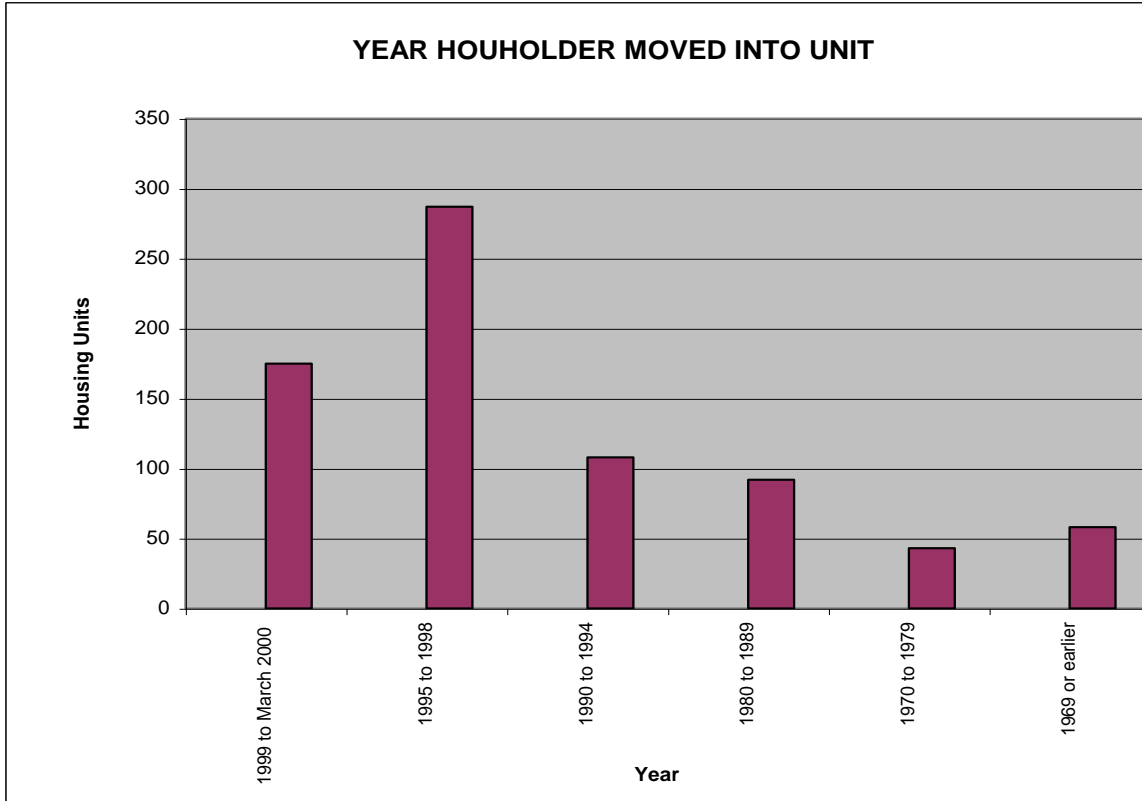


**Table 6-2
Number of Housing Units by Structure Type**

	<u>1990</u>	<u>2000</u>
Single family residential	371	605
2 to 4 units per structure	44	49
5 or more units per structure	52	60
Mobile homes	106	91
Total	573	805

New occupants moved into 462 housing units between the period January 1995 and March 2000. The 462 housing units constitute 61.5 percent of the housing stock. The number of occupancies is shown in Figure 6-5. The median housing value in Eatonville in 2000 was \$132,800. The average rent was \$641 per month.

**Figure 6-5
The Year Householder Moved Into Unit**



6.5 LABOR FORCE

According to year 2000 U.S. Census, of the 2,012 persons residing in Eatonville, 889 were in the labor force. Labor force participation rate in Eatonville is 83.2 percent, considering that 1,068 persons are in the labor force age group, those between ages of 20 and 64. Labor force participation in Eatonville in 2000, as reported by the U.S. Census, is shown in Table 6-3.

**Table 6-3
Labor Force Participation
Year 2000**

Industry	Persons
Agricultural, forestry, hunting, mining	42
Construction	71
Manufacturing	85
Wholesale trade	31
Retail trade	137
Transportation, warehousing, utilities, transportation	60
Information	22
Finance, insurance, real estate	16
Professional, scientific, managerial, administration	54
Educational, health, social services	202
Arts, entertain, recreation, accommodat., food services	64
Other services	48
Public administration	57
Total	889

Of the total 889 persons in the labor force, 610 persons or 68.6 percent were private wage and salary workers and 195 persons or 21.9 percent were government workers. Self employed and unpaid family workers made up the difference of 84 persons or 9.5 percent. Education, health and social services industry sector attracted the greatest number of employees residing in Eatonville.

6.6 EMPLOYMENT

Employment in Eatonville is reported by the Washington State Department of Employment Security. They report only covered employment, meaning those jobs that are required to pay into the State unemployment compensation fund. Many jobs, particularly in private industry, are exempt from the requirement of having to pay unemployment compensation. For example, owners and executives of businesses are exempt. The number of jobs by employment sector for the year 1998 is shown in Table 6-4. Government is the largest employment sector in Eatonville and accounts for 22.3 percent of the total employment base. Other major employment sectors are retail trade and services.

**Table 6-4
Eatoville Employment
1998**

Employment Sector	Number of Firms	Number of Jobs
Agriculture, forestry, fisheries	5	7
Mining	+	+
Construction	57	155
Manufacturing	17	121
Transport., communic., utilities	14	66
Wholesale trade	+	+
Retail trade	35	238
Finance, insurance, real estate	+	+
Services	71	203
Government	9	250
Total	226	1,123

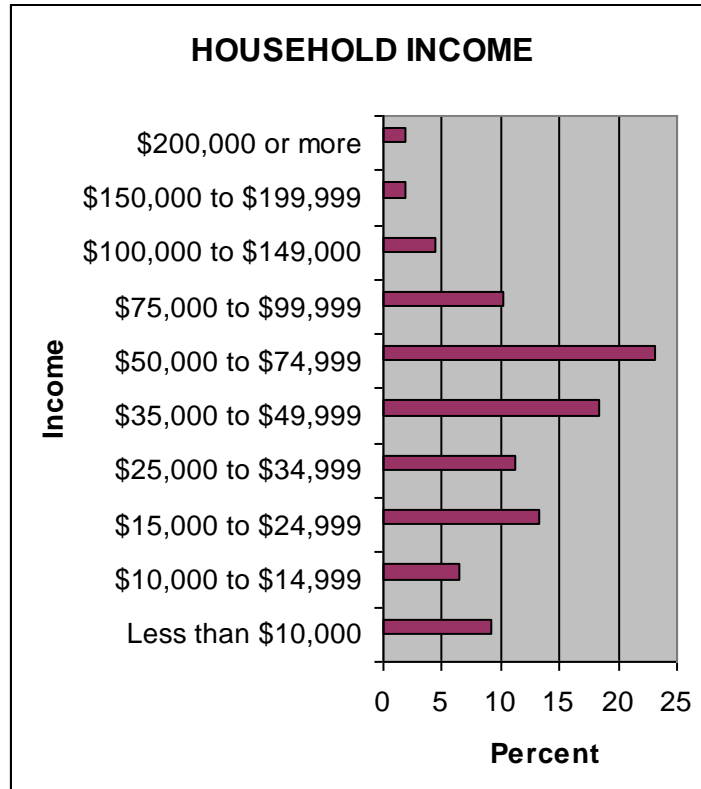
+ Indicates data hidden to avoid disclosure of small or single employers.
Source: Washington State Employment Security Department

6.7 INCOME

Median household income in 1999 was \$43,681, as reported to the U.S. Census. Of the 723 households, 571 or 79.0 percent, had earnings in addition to employment income, rising the mean household income to \$54,169. Of the total, 190 households or 26.3 percent received social security payments and an additional 19 households or 2.6 percent, received supplemental security income. The median family income amounted to \$50,733 and the per capita income to \$19,513. A male, employed full-time and year-round, earned \$41,950 and a female employed full-time, year-round earned \$25,380. The mean retirement income in Eatonville was \$15,229.

The household income in 1999 by income category is shown in Figure 6-6. Of the total 723 households, 168 households, or 23.2 percent earned somewhere between \$50,000 and \$74,999.

**Figure 6-6
Household Income - 1999**



6.8 SCHOOL ENROLLMENT

Public school services in the Eatonville area are provided by the Eatonville School District No. 404. The School District student enrollment in 2000 was about 1,800 students.

Of the 1,800 students, 511 came from the Town of Eatonville. Of the 511 students, 27 attend kindergarten, 330 are enrolled in the elementary school and 154 in high school. Additional 39 students attend college.

6.9 EDUCATIONAL ATTAINMENT

Educational attainment of population of 25 years and older is reported by the 2000 U.S. Census as follows: 84.6 percent are high school graduates; and 17.1 percent have a bachelor's degree or higher.