

RESOLUTION 2018-B

**A RESOLUTION OF THE EATONVILLE TOWN COUNCIL REPEALING
RESOLUTION 2008-JJ AND VACATING CEMETERY PLOTS TO ALLOW ACCESS TO
OTHER PLOTS**

WHEREAS, Resolution 2008-JJ vacated Maple Street, Ailanthus Street, Alder Street, and a portion of Acadia Street all located within the Eatonville Cemetery for use as new cemetery plots, and;

WHEREAS, vacating the streets has not left enough room for equipment to be able to dig a grave without driving over existing plots that are occupied, and;

WHEREAS, the plots along the East end of the Cemetery in Block 4 do not allow room for employees to access plots to dig a grave without driving over existing plots; and

**THE TOWN COUNCIL OF THE TOWN OF EATONVILLE, WASHINGTON, HEREBY
RESOLVES AS FOLLOWS:**

THAT: Resolution 2008-JJ is hereby repealed in its entirety and

FURTHER THAT: The following plots located in Block 4 of the Eatonville Cemetery are hereby vacated and not available for purchase; and

Lot 1 Plots 6-8	Lot 4 Plots 5-8	Lot 5 Plots 5-8
Lot 8 Plots 5-8	Lot 9 Plots 5-8	Lot 12 Plots 5-8
Lot 13 Plots 5-8	Lot 16 Plots 5-8	Lot 17 Plots 5-8
Lot 19 Plots 3-4	Lot 20 Plots 1-8	Lot 23 Plots 3-4
Lot 22 Plot 5		

AND FURTHER THAT: Prices for cemetery plots and services are hereby adopted in accordance with Exhibit A attached. The rates described on Exhibit A shall be adjusted on January 1, 2019 by an amount equal to 90 percent (90%) of the adjustment in the consumer Price Index for Urban Wage Earners and Clerical Workers (CPI-W) Greater Seattle Metropolitan Index as measured by averaging the April adjustment for the previous five (5) years, with the resulting rate rounded up or down to the nearest ten cents (\$0.10). Rates shall then be adjusted annually thereafter on January 1 each year, on the same basis.

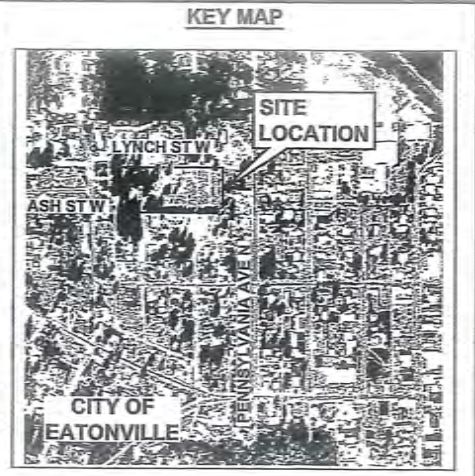
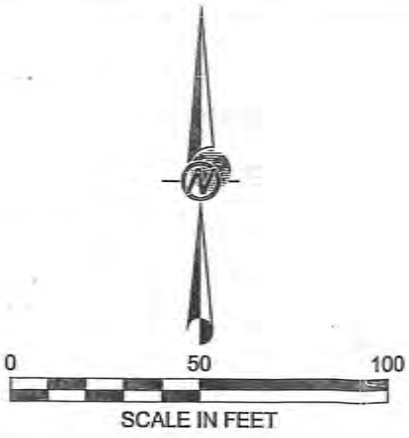
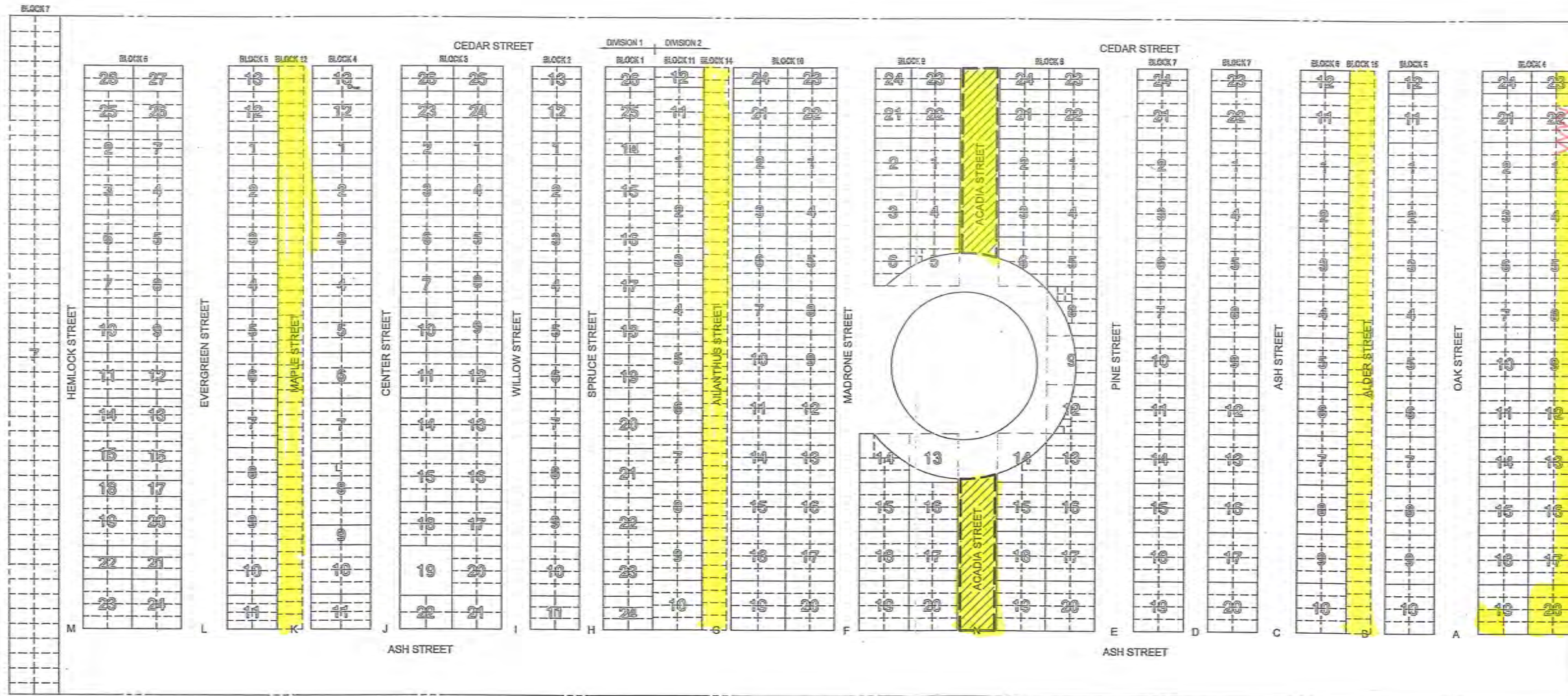
PASSED by the Town Council of Town of Eatonville and attested by the Town Clerk in authentication of such passage this 22nd day of January 2018.

Mike Schaub, Mayor

ATTEST:

Kathy Linnemeyer, Town Clerk

K:\CAD\Projects\2003\033\1531\001\101033_1531_001_101_F01.dwg | FIG-1 | Mod: 08/24/2006, 11:03 | Plotted: 08/25/2006, 08:05 | rddierich



LEGEND

- APPROXIMATE LOCATION OF EXISTING GRAVES OR GRAVE SITES
- PROPOSED GRAVE SITE
- FUTURE MAUSOLEUM SITE

INSTRUMENTATION
GSSI SIR-2000 GROUND PENETRATING RADAR

GEODETTIC PARAMETERS
VERT. DATUM: -
HORIZ. DATUM: -
PROJECTION: -

Golder Associates
GOLDER ASSOCIATES INC.
18300 NE UNION HILL ROAD, STE. 200
REDMOND, WA USA 98052-3333
TEL: (425) 883-0777
FAX: (425) 882-5498

SUBMITTED TO:
TOWN OF EATONVILLE

PROJECT:
TEPWD / EATONVILLE CEMETERY GEO / WA

TITLE:
EATONVILLE CEMETERY

PROJECT	033-1531001.001	DESIGN	MAB	5/20/05
FILE No.	033_1531001_001_F01	CADD	NED	4-16-08
REV.	0	CHECK	MAB	5/20/05
SCALE	AS SHOWN	REVIEW	DB	5/20/05

FIGURE 1